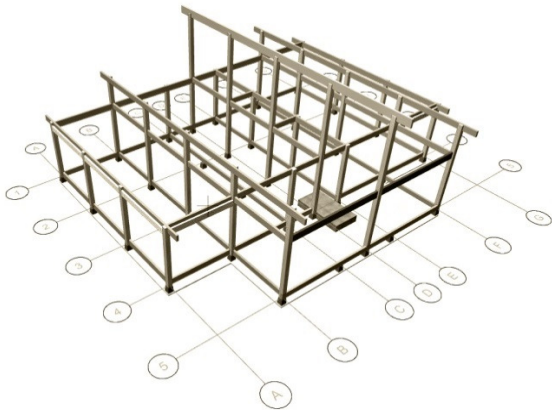


DELIVERY SPECIFICATION

- Price list
- For offer
- For sales contract

All plans can be modified to the customers liking. However, where revisions to the house plan are structurally necessary, Artichouse's project engineer is entitled to make such changes as appropriate within these specifications.

1. THE POST & BEAM FRAME



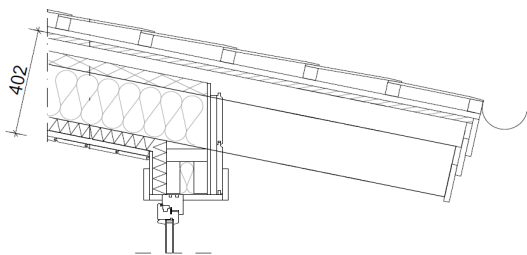
- CNC-Machined laminated timber posts
- CNC-Machined laminated timber beams
- Steel parts for the Post & Beam fastening system
 - Optional* - Hidden steel parts for the Post & Beam fastening system
- Capillary break between the wooden parts & foundation

All posts and beams are fully machined at the factory:

- cut to exact length*
- grooves and holes for fasteners drilled and notched*

Posts and beams are certified Finnish spruce, strength graded and CE-marked

2. ROOFING



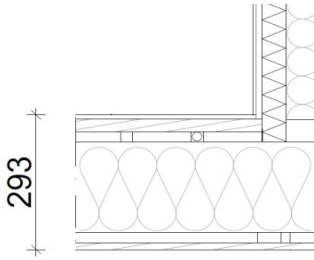
- Roof boarding / OSB-board 18mm
- Elevation battens
- Roof rafters
- L-steel connector and anchor nails for installing roof rafters
- Fascia- and facing boarding
- Eaves soffit boarding
- Panelling between rafters (on the wall) + fixage battens

Thickness of roof
insulation space:
300 mm

3. CEILING

- Battens
- Fixage battens for ceiling panel
- Ceiling panel
 - Optional* - Plaster boards

X 4. INTERMEDIATE FLOOR STRUCTURE



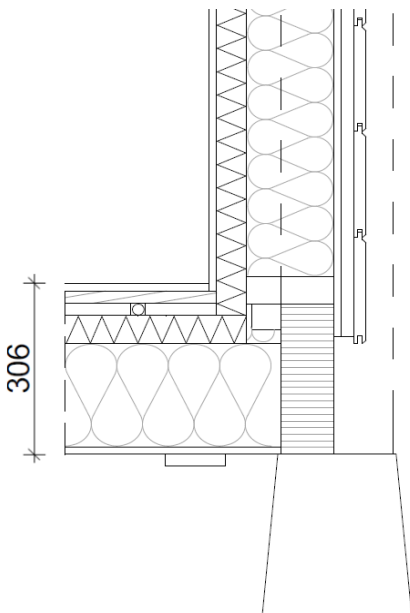
For designs with a first floor

- Floor boarding, pine 28x95
- Plywood 15mm (bathroom)
- Intermediate floor joists
- Fixage battens for joists
- Fixage battens for ceiling panel or plaster boards
- Ceiling panel
- Optional* - Plaster boards

Floor structure can be modified to be suitable for bisquit screed & underfloor heating

Laminated flooring and parquet flooring also available

X 5. FLOOR STRUCTURE



FOR A CONCRETE SLAB FOUNDATION

- Floor boarding (dry area) 28x95
- Batten 48x48

FOR A PIER/STILT OR STRIP FOUNDATION (insulation space 250mm)

- Floor boarding, pine 28x95
- Plywood 15mm (wet area = bathroom)
- Floor joists
- Floor joists bearers
- Building board - spruce veneer

Floor structure can be modified to be suitable for bisquit screed & underfloor heating

Laminated flooring and parquet flooring also available

X 6. SKIRTING BOARDS

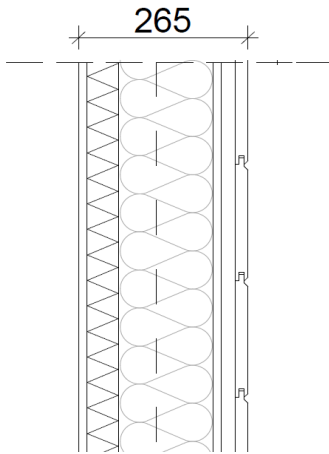
- Architraves, inside & outside (doors and windows)
- Internal moulding (doors and windows)
- Ceiling moulding
- Skirting board

X 7. SAUNA *If shown in plans*

- Panelling (spruce)
- Bench materials (spruce)
- Bench framing (spruce)

Sauna stoves are available by additional order

X 8. EXTERNAL WALLS

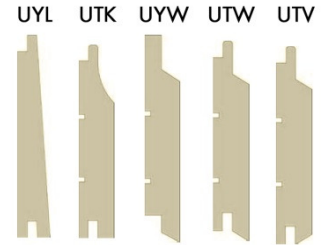


Listed from outside to inside:

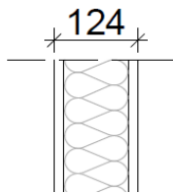
- External cladding
- OSB-board
- Frame studs
- Fixage battens
- Internal panelling
- Optional - Plaster board*

Thickness of wall
insulation space:
200 mm

The profile for external cladding
can be chosen from the following:
*UTV is the standard cladding



X 9. LIGHT PARTITION WALLS

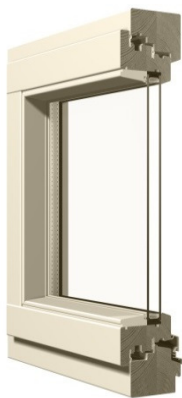


- Wooden paneling (log panel)
- Optional - plaster boards*
- Plaster boards (for bathrooms)
- Frame studs

X 10. VERANDAS & BALCONYS

- Terrace boarding (PI) 28x95
- Terrace floor joists (PI)
- Wooden railings for verandas and balconies
- Optional - Glazed timber railings with installation accessories*

X 11. WINDOWS



- DK 2, 68mm (dreh-kipp) U-value 1,3 W/m2K
- EK 2, 68mm (fixed) U-value 1,3 W/m2K
- Painted (standard color white)
- Selective glass + argon are always included
- Safety glass is included when
- a) window height is more than 1,5m or
- b) windows are closer than 0,8m from internal floor or terrace level

Various window types, treatments, opening methods and other upgrades are available.

Typical upgrades are:

- triple glazed windows with external aluminium cladding (U-value 1,0-1,1 W/m2K)*
- custom RAL-colors or differing colors for internal & external surfaces*

X 12. INTERNAL DOORS



- Pine doors, solid wood. Fully or partially glazed doors are also available
- Standard surface treatment is clear varnish. Other treatments available
- Door furniture included, broad s if a sauna is shown in the plans
- Sauna door (8 mm safety glass)

Sound insulating doors are available

A vast selection of oak, ebony and teak veneer doors are available

X 13. EXTERNAL DOORS



- External doors (either partially or fully glazed) U-value 1,0 W/m²K
- Terrace- and balcony doors (glazed)
- Sliding panorama doors, models: 117, 173, 218, 250, 257, 290

Matching paints and treatments available for windows and doors.

Triple point locking is always included

A vast selection of oak and teak veneer doors are available

X 14. STAIRS



- VS-stairs (Width max 850mm, pitch ~45°), models: 102, 153.
- Straight stairs, models: 176, 228, 263.
- L-stairs, model: 218.
- U-stairs, models: 250, 257, 265, 290.
- Railing

Standard stair material is lacquered pine

Stained and painted stairs are available

Stairs with glass railings can be delivered.

The shape of the stairs always depends on the floor plan and design of the house